

Identification of western bean cutworm and similar species

Marlin E. Rice
Extension & Research Entomologist
Iowa State University
Ames, IA



Objective

- Learn to correctly identify western bean cutworms:
 1. Late-stage larvae attacking corn ears
 2. Adults (moths) in pheromone traps



Species attacking corn ears

- western bean cutworm
- European corn borer
- corn earworm
- fall armyworm
- yellow-striped armyworm
- two stages
 - larvae
 - adults (moths)



Western bean cutworm

- Pronotum (neck) with two broad brown stripes
- No dark tubercles (warts or spots)



© Marlin E. Rice



Corn earworm

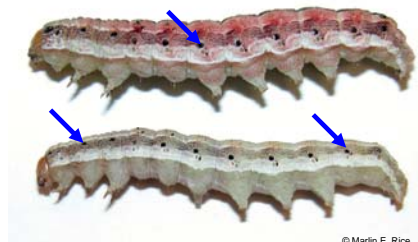
- Pronotum (neck) without two broad brown stripes
- Dark tubercles (warts) on back and sides
- Lateral stripe pale in color



© Marlin E. Rice



Corn earworm

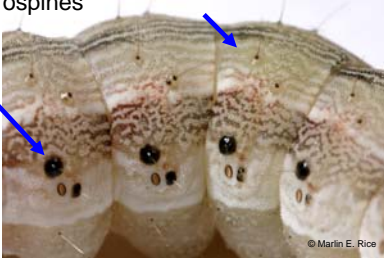


© Marlin E. Rice



Corn earworm

- Tubercles (warts) and skin texture with microspines



© Marlin E. Rice



Corn earworm

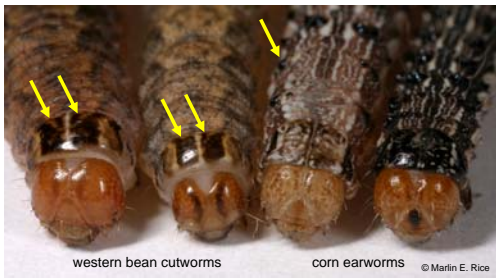
- Pronotum (neck) lacks broad brown stripes



© Marlin E. Rice



Western bean cutworm and corn earworm



western bean cutworms

corn earworms

© Marlin E. Rice



Western bean cutworm and corn earworm



© Marlin E. Rice



Fall armyworm

- Pronotum (neck) without two broad brown stripes
- Lateral stripe pale in color
- Dark tubercles (warts) on back and sides
 - Form distinctive square or trapezoid pattern



© Marlin E. Rice



Fall armyworm

trapezoid pattern on mid-segments



square pattern on "tail" segment

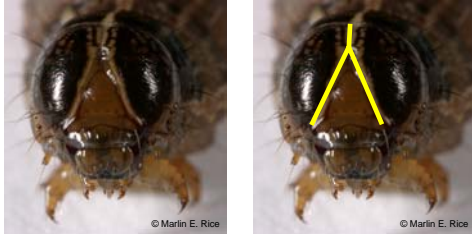


© Marlin E. Rice



Fall armyworm

- Inverted “Y” on front of head



European corn borer

- Solid dark head (black or reddish brown)
- No lateral stripes
- Tubercles like a “halo”



European corn borer



European corn borer



European corn borer



Yellow-striped armyworm

- Distinctive yellow stripe (one on each side)
- Lateral black spot at about ¼ body length behind head



western bean cutworm

- White wing bar on front or leading edge
- Small spots shaped like “full moon” and “boomerang”



corn earworm



European corn borer



yellow-striped armyworm



fall armyworm



western bean cutworm

- Larva
 - Two dark brown stripes on pronotum (neck)
 - No lateral pale stripes on side of body
 - No dark tubercles (warts)
- Adult
 - White wing bar on front edge of wing
 - “full moon” and “boomerang” spots